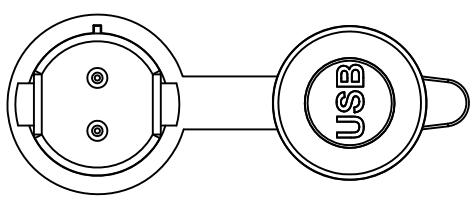
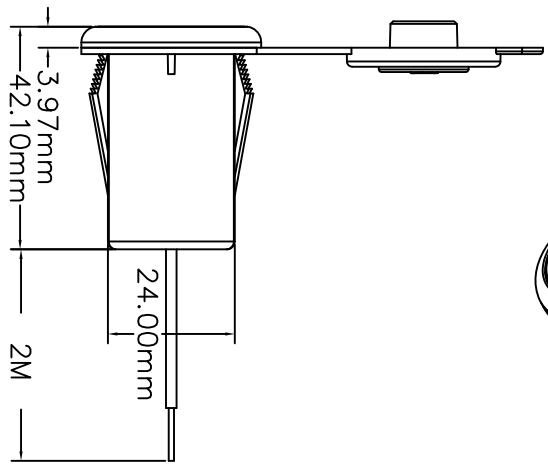
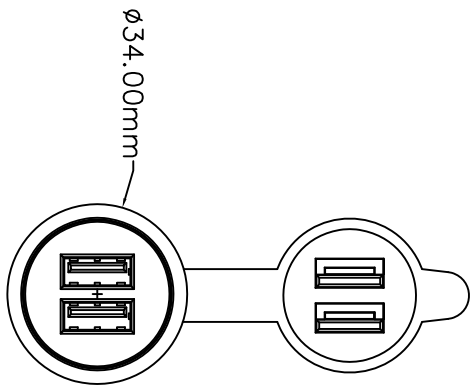
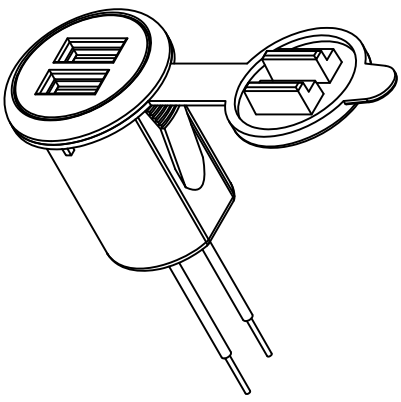
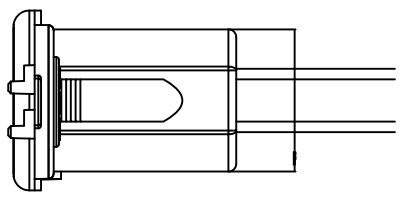
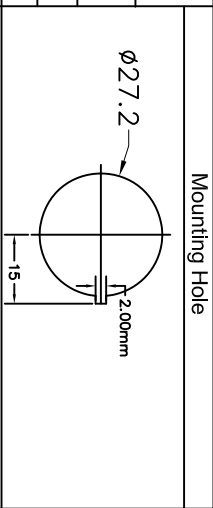


Rating	Input: 12V/24 DC Output: 5V DC 2.1A max.
Insulation Resistance	DC 500V 100MΩ Min.
Dielectric Strength	AC 1500V 1 minute
Operating Temperature	0 C - 60 C



EA
ENGINEERING
ALTERNATIVES

EA MANUFACTURING, LLC
P.O. BOX 8073
JACKSONVILLE, FL 32239
PHONE: 904-536-1780
EMAIL: brian@eamanufacturing.com
www.eamanufacturing.com

TITLE
2:1USBCHG
DIMENSIONAL DRAWING

SIZE	CAGE CODE	DWG NO	REV
B	73603	2:1USBCHG DIM	A
SCALE	NA	SHEET	1 OF 1

Tolerances ±0.3 Unless Otherwise Specified